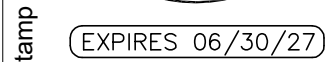


AC0
AD
AF
AF
AF
AF
AH
AP
AT
AW
BB
BB
BC
BD
BF
BH
BM
BO
BO
BO
BTU
C
CAY
CC
CC
CCH
CF
CH
CH
CM
CM
CNI
CO
CO
CV
CV
CWC
dB
DB
DB
CC
EC
ED
EDF
CCI
CH
CX
E
EA
EA
EC
EF
EF
ELE
ERV
ES
FT
F&T
FA
FA
FC
FP
FP
FM
FM
GA
SC
GE
GFI
GFI
GFI
H
HC
HG
HO
HO
HR
HR

C
J
-
G
R
S
J
C
M
G
P
S
O
J
S
J
/
N
W
M
G
U
D
O
NT
RRR
\$
C
T
R
E
EV
T
-
M
V
H
D
M
A

[illegible]

BID SET

REDMOND SCHOOL DISTRICT

MODERNIZATION

OBSIDIAN MIDDLE SCHOOL

g Title: PLUMBING SCHEDULES

Date : 2026-01-30

Project No. 25022

Sheet No

P0.02

REMARKS:			
1. PROVIDE ALL FIXTURES WITH APPROPRIATE COMMERCIAL GRADE SUPPORTS/CARRIERS, P-TRAPS, STOP VALVES, BRAIDED FLEXIBLE SUPPLIES, UNDER FIXTURE PIPING INSULATION AND HAMMER ARRESTORS.	2. PROVIDE AND INSTALL TRAP PRIMERS FOR ALL FLOOR DRAINS AND FLOOR SINKS UNLESS OTHERWISE INDICATED.	3. INSTALL ALL TRAP PRIMERS IN RECESSED WALL MOUNTED BOXES IN AN ACCESSIBLE LOCATION.	4. FIELD COORDINATE INSTALLATION LOCATION OF TRAP PRIMER WALL BOXES, WATER CLOSETS, LAVATORIES, AND URINALS FOR ADA COMPLIANCY WITH ARCHITECT/ENGINEER.

MARK	DESCRIPTION	FIXTURE					TRIM				ROUGH-IN SIZE (IN)				REMARKS
		ADA	MANUF.	MODEL	MATERIAL / FINISH	MOUNTING / HEIGHT	DESCRIPTION	MANUF.	MODEL	MATERIAL / FINISH	WASTE	VENT	COLD	HOT	
FD-1	FLOOR DRAIN WITH ADJUSTABLE HEIGHT ROUND STRAINER	--	JR SMITH	2005	CAST IRON BODY / NICKEL BRONZE STRAINER	FLOOR	--	--	--	--	2"	1-1/2"	1/2"	--	PROVIDE COMPLETE WITH TRAP PRIMER CONNECTION, PIPING TO TRAP PRIMER, AND TRAP SEAL.
L-1	LAVATORY - WALL MOUNTED - METERING FAUCET	NO	KOHLER	K-2007	VITREOUS CHINA	WALL / STANDARD HEIGHT	METERING FAUCET	MOEN	8884	CHROME	2"	1-1/2"	1/2"	1/2"	METERED FAUCET - PROVIDE JR SMITH #700 SERIES CARRIER, WATER STOPS. PROVIDE WITH THERMOSTATIC MIXING VALVE TO LIMIT HOT WATER DELIVERY TO 110°F.
L-2	LAVATORY - WALL MOUNTED - METERING FAUCET	YES	KOHLER	K-2007	VITREOUS CHINA	WALL / ADA HEIGHT	METERING FAUCET	MOEN	8884	CHROME	2"	1-1/2"	1/2"	1/2"	METERED FAUCET - PROVIDE JR SMITH #700 SERIES CARRIER, WATER STOPS, OFFSET DRAIN W/ TRUEBRO LAV GUARD II PIPE INSULATION. PROVIDE WITH THERMOSTATIC MIXING VALVE TO LIMIT HOT WATER DELIVERY TO 110°F.
UR-1	URINAL - TOP SPUD - STANDARD HEIGHT	NO	KOHLER	K-4991-ETSS	VITREOUS CHINA	WALL / 24" TO LIP	MANUAL FLUSH VALVE	SLOAN	186	CHROME	2"	1-1/2"	3/4"	--	0.5 GALLON PER FLUSH URINAL WITH TOP SPUD - STANDARD HEIGHT MOUNTING - MANUAL FLUSH VALVE.PROVIDE WITH WALL CLEANOUT.
UR-2	URINAL - TOP SPUD - ADA HEIGHT	YES	KOHLER	K-4991-ETSS	VITREOUS CHINA	WALL / 17" TO LIP	MANUAL FLUSH VALVE	SLOAN	186	CHROME	2"	1-1/2"	3/4"	--	0.5 GALLON PER FLUSH URINAL WITH TOP SPUD - ADA HEIGHT MOUNTING - MANUAL FLUSH VALVE. PROVIDE WITH WALL CLEANOUT.
WC-1	WATER CLOSET - WALL MOUNTED - FLUSH VALVE	NO	KOHLER	K-84325-SS	VITREOUS CHINA	WALL / STANDARD HEIGHT	MANUAL FLUSH VALVE	SLOAN	111	CHROME	4"	2"	1"	--	WALL MOUNTED - MANUAL FLUSH VALVE - 1.28 GALLONS PER FLUSH - KOHLER #K-4666 CA ELONGATED OPEN FRONT TOILET SEAT, HEAVY-DUTY COMMERCIAL - JR SMITH COMPACT VERTICAL CARRIER
WC-2	WATER CLOSET - WALL MOUNTED - FLUSH VALVE	YES	KOHLER	K-84325-SS	VITREOUS CHINA	WALL / ADA HEIGHT	MANUAL FLUSH VALVE	SLOAN	111	CHROME	4"	2"	1"	--	WALL MOUNTED - MANUAL FLUSH VALVE - 1.28 GALLONS PER FLUSH - KOHLER #K-4666 CA ELONGATED OPEN FRONT TOILET SEAT, HEAVY-DUTY COMMERCIAL - JR SMITH COMPACT VERTICAL CARRIER

REMARKS:			
1. PROVIDE ALL FIXTURES WITH APPROPRIATE COMMERCIAL GRADE SUPPORTS/CARRIERS, P-TRAPS, STOP VALVES, COMMERCIAL GRADE	2. PROVIDE AND INSTALL TRAP PRIMERS FOR ALL FLOOR DRAINS AND FLOOR SINKS UNLESS OTHERWISE INDICATED.	3. INSTALL ALL TRAP PRIMERS IN RECESSED WALL MOUNTED BOXES IN AN ACCESSIBLE LOCATION. FIELD COORDINATE INSTALLATION LOCATION	4. INSTALL ALL FIXTURES AS PER THE MANUFACTURER'S WRITTEN INSTALLATION INSTRUCTIONS.

MARK	DESCRIPTION	MANUF.	MODEL	MOUNTING / MOUNTING HEIGHT	MATERIAL & FINISH	TRIM	DRAIN	VENT	COLD	HOT	REMARKS
TP-1	TRAP PRIMER - DIFFERENTIAL PRESSURE	WATTS	LFTP300T	WALL / MIN. 24" AFF	BRASS - LEAD FREE - EPDM SEALS	--	--	--	1/2"	--	
WCO	WALL CLEAN OUT	JR SMITH	4422	WALL / 18" AFF	STEEL	WITH CHROME COVER	LINE SIZE	--	--	--	CAST IRON CAULK FERRULE WITH CAST IRON LEAD SEAL PLUG

NOTE: 1. INSULATION THICKNESS IS BASED ON A CONDUCTIVITY NOT EXCEEDING 0.27 BTU • INCH / (HR • FT² • °F)
2. PLASTIC PIPE SHALL NOT BE INSTALLED WITHIN THE FIRST 18" OF A WATER HEATER
3. PROVIDE SEISMIC BRACING OF PIPING 2'-1/2" AND LARGER OR AS REQUIRED BY LOCAL CODES.
4. INSULATION ON HOT WATER FLAME SPREAD LESS THAN 25 AND A SMOKE-DEVELOPED INDEX OF NO MORE THAN 50 WHEN TESTED IN ACCORDANCE WITH ASTM E84 OR UL723.
5. NO PLASTIC PIPING IS ALLOWED IN AIR PLenums.
6. INSULATION ON HOT WATER PIPING SHALL REQUIRE A DIELECTRIC NIPPLE. DIELECTRIC UNIONS ARE NOT ALLOWED.
7. PROVIDE FIBERGLASS ALL SERVICE JACKET (ASJ).
8. ASJ TO BE SEALED AT ALL SEAMS AND EDGES.
9. PROVIDE PVC COATED JACKET ON ALL EXPOSED PIPING.
10. PROVIDE ALUMINUM JACKET WITH UV PROTECTIVE COATING ON ALL OUTDOOR PIPING INSTALLATIONS (POLYGUARD OR APPROVED EQUAL)

SYSTEM	ABBREV	PIPE MATERIAL	INSULATION
DOMESTIC COLD WATER - BELOW GRADE - TRAP PRIMERS	DCW	PEX	NONE
DOMESTIC COLD WATER < 1-1/2"ø	DCW	L' COPPER / PEX	1/2"
DOMESTIC COLD WATER ≥ 1-1/2"ø	DCW	L' COPPER / PEX	1"
DOMESTIC HOT WATER < 1-1/2"ø	DHW	L' COPPER / PEX	1"
DOMESTIC HOT WATER ≥ 1-1/2"ø	DHW	L' COPPER / PEX	1-1/2"
SANITARY SEWER - ABOVE GRADE	SAN	SCHEDULE 40 PVC	NONE
SANITARY SEWER - BELOW GRADE	SAN	SCHEDULE 40 PVC	NONE
VENT	V	SCHEDULE 40 PVC	NONE

REMARKS: 1. TABLE IS BASED ON CHAPTER 6,7 AND APPENDIX A OF THE OREGON PLUMBING SPECIALTY CODE.	NEW SYSTEM LOAD IS WITHIN EXISTING SYSTEM CAPACITY.
---	---

MARK	DESCRIPTION	DFU	CWFU	HWFU	COUNT	DFU	WSFU	
							COLD	HOT
FD-1	EMERGENCY FLOOR DRAIN	0	0	0	2	0	0	0
L-1	LAVATORY	1	1	1	9	9	9	9
L-2	LAVATORY	1	1	1	4	4	4	4
UR-1	URINAL	2	4	0	6	12	24	0
UR-2	URINAL	2	4	0	2	4	8	0
WC-1	FLUSH VALVE WATER CLOSET	4	5	0	14	56	70	0
WC-2	FLUSH VALVE WATER CLOSET	4	5	0	5	20	25	0
					TOTALS	105	140	13

[illegible]

BID SET

REDMOND SCHOOL DISTRICT

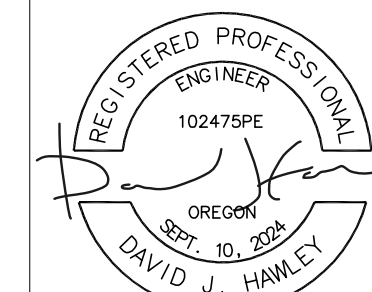
MODERNIZATION

UBSIDIAN MIDDLE SCHOOL

026-01-30	
	Project No. 25033

	Date :	Revised
Sheet No. P0.03		





EXPIRES 06/30/27

[illegible]

BID SET

REDMOND SCHOOL DISTRICT

MODERNIZATION

OBSEDIAN MIDDLE SCHOOL

Title: **OVERALL FLOOR PLAN**

Date : 2026-01-30

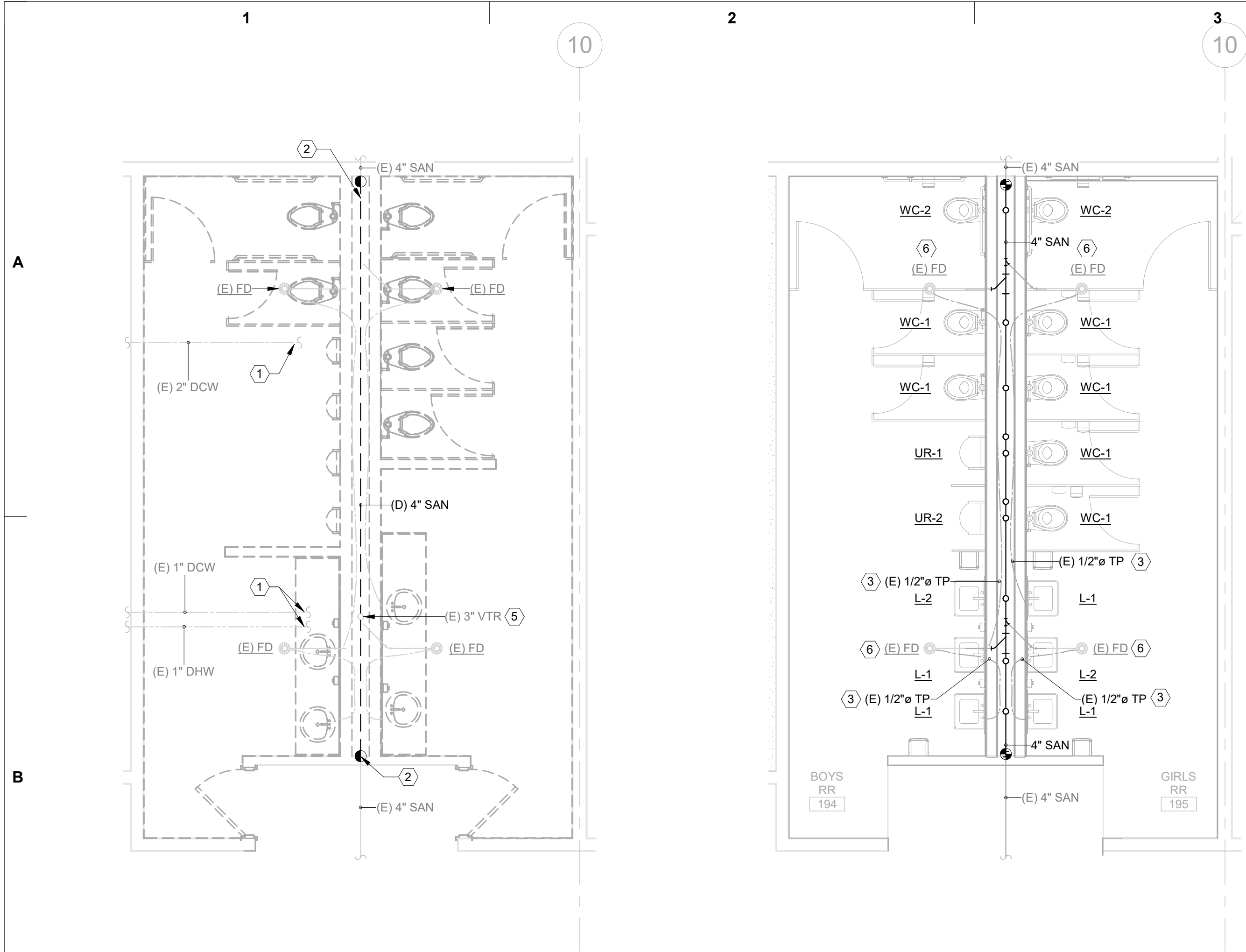
Project No. 2E032

Sheet No

P1.00

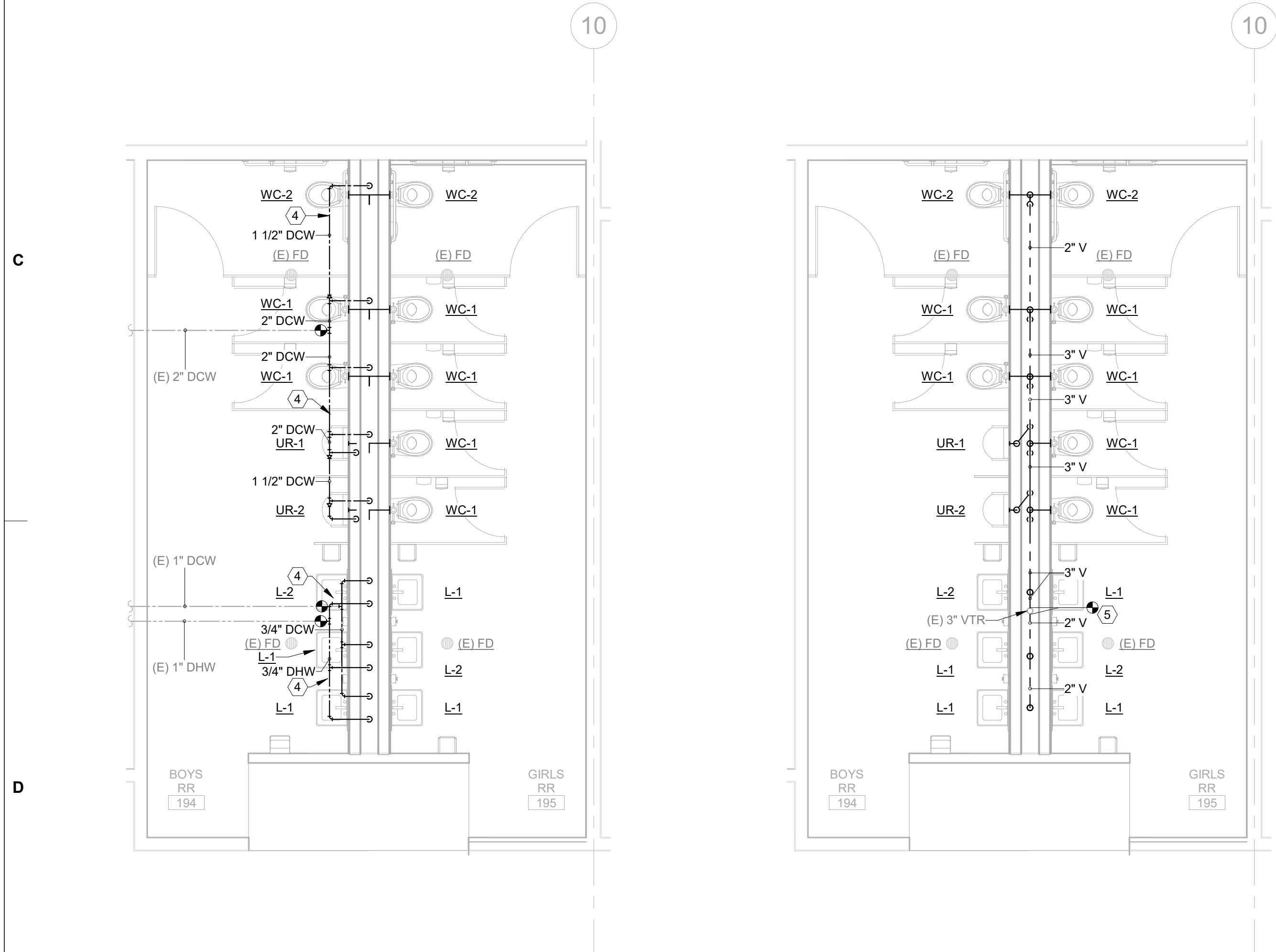
1 OVERALL PLUMBING PLAN
1" = 20'-0" @ FULL SIZE

1/23/2026 12:56:45 PM



1 DEMO PLUMBING PLAN - 194/195 RESTROOMS
1/4" = 1'-0" @ FULL SIZE

2 UNDERSLAB PLUMBING PLAN - 194/195 RESTROOMS
1/4" = 1'-0" @ FULL SIZE



3 DOMESTIC PLAN - 194/195 RESTROOMS
1/4" = 1'-0" @ FULL SIZE

4 SANITARY PLAN - 194/195 RESTROOMS
1/4" = 1'-0" @ FULL SIZE

PLUMBING PLAN NOTES

- PROVIDE ACCESS DOORS TO ALLOW SERVICE AND INSPECTION OF EQUIPMENT, VALVES, AND OTHER DEVICES INSTALLED IN INACCESSIBLE LOCATIONS. COORDINATE SUCH INSTALLATIONS WITH THE ARCHITECT AND ENGINEER.
- PROVIDE TRAP SEALS AND TRAP PRIMERS FOR FLOOR DRAINS, FLOOR SINKS, AND OTHER FLOOR RECEPTORS.
- INSTALL ACCESSIBLE PLUMBING FIXTURES IN COMPLIANCE WITH ADA REQUIREMENTS. INSULATE EXPOSED PIPING BELOW ADA ACCESSIBLE FIXTURES.
- INSTALL FLOOR DRAIN STRAINERS AND CLEANOUT COVERS FLUSH AND LEVEL WITH FINISHED FLOOR.
- PIPING SHALL BE IDENTIFIED WITH PIPE LABELS MARKED AT A MAXIMUM OF EVERY 25 FT. VALVES SHALL BE IDENTIFIED WITH BRASS OR ALUMINUM VALVE TAGS.
- PROVIDE AND INSTALL PIPE GUIDES, EXPANSION JOINTS, AND HANGERS PER MANUFACTURER'S RECOMMENDATIONS.
- PIPING WALL PENETRATIONS SHALL BE FINISHED WITH A CHROME ESCUTCHEON PLATE.
- MAINTAIN THE INTEGRITY OF DRAFTSTOPPING WHERE PIPES PENETRATE DRAFTSTOPPING MATERIALS.
- NO FITTINGS OR PIPING CONNECTIONS SHALL BE INSTALLED UNDERSLAB.
- REFER TO THE PLUMBING FIXTURE SCHEDULE FOR PIPE SIZES TO INDIVIDUAL FIXTURES.
- COORDINATE CONCRETE PENETRATIONS WITH STRUCTURAL DRAWINGS TO VERIFY HOW AND WHERE CONCRETE CAN BE CUT.
- SANITARY SEWER, RAINWATER, AND OTHER DRAIN PIPING SHALL BE INSTALLED AT A MINIMUM 1/4" PER FOOT (2%) SLOPE IN DIRECTION OF FLOW UNLESS OTHERWISE INDICATED ON THE DRAWINGS.

PLUMBING DEMO NOTES

- LOCATIONS AND DIMENSIONS OF EXISTING FACILITIES IDENTIFIED ON THIS DRAWING ARE APPROXIMATE AND REPRESENT THE BEST AVAILABLE INFORMATION BASED ON A COMBINATION OF FIELD INVESTIGATIONS AND VARIOUS DESIGN AND RECORD DRAWINGS AVAILABLE AT THE TIME OF DESIGN. FIELD VERIFY LOCATIONS AND DIMENSIONS PRIOR TO ORDERING EQUIPMENT AND DURING PERFORMANCE OF THE WORK. PROVIDE DEMOLITION WORK, NECESSARY FITTINGS, TRANSITIONS, AND OTHER COMPONENTS AS REQUIRED FOR A COMPLETE AND FUNCTIONAL INSTALLATION OF NEW SYSTEMS AT NO ADDITIONAL COST TO THE OWNER.
- EXISTING PLUMBING EQUIPMENT, FIXTURES, AND PIPING SHOWN AS DARK AND DASHED SHALL BE DEMOLISHED. EXISTING PLUMBING EQUIPMENT, FIXTURES, AND PIPING SHOWN LIGHT SHALL REMAIN UNCHANGED.
- THE PLUMBING CONTRACTOR SHALL COORDINATE SALVAGE OF REMOVED EQUIPMENT IN GOOD CONDITION WITH THE OWNER. THE PLUMBING CONTRACTOR SHALL DISPOSE OF UNWANTED EQUIPMENT.
- COORDINATE WITH GENERAL CONTRACTOR TO PATCH AND REPAIR ROOF AND WALL ASSEMBLIES ASSOCIATED WITH PLUMBING DEMOLITION.
- CONCRETE SLAB CUTTING REGIONS SHOWN ON DRAWINGS ARE APPROXIMATE AND MUST BE FIELD COORDINATED PRIOR TO THE CUTTING OF THE SLAB.
- PROTECT EXISTING BUILDING ELEMENTS DURING DEMOLITION WORK. COORDINATE WITH OTHER TRADES TO ENSURE NO EXISTING EQUIPMENT/PIPING TO REMAIN IS DAMAGED DURING THE DEMOLITION WORK.

KEY NOTES:

- ROUTING OF EXISTING DOMESTIC WATER WITHIN PLUMBING CHASE UNKNOWN. CONTRACTOR OPTION TO DEMO ALL EXISTING DOMESTIC WATER IN PLUMBING CHASE OR REUSE IN PLACE AS APPROPRIATE BASED ON EXISTING PIPE CONDITION TO MATCH DESIGN CONNECTION SIZES.
- CONTRACTOR OPTION TO DEMO ENTIRE SECTION OF SANITARY PIPING AS SHOWN OR SELECTIVELY DEMO BASED ON DEMOLISHED AND NEW FIXTURE LOCATIONS AND REUSE PIPING IN PLACE AS APPROPRIATE BASED ON EXISTING PIPE CONDITIONS. COORDINATE WITH SLAB DEMOLITION TO MINIMIZE SAWCUTTING FLOOR.
- ROUTING OF EXISTING TRAP PRIMER PIPING UNKNOWN. CONNECT EXISTING TRAP PRIMER PIPING TO NEW TRAP PRIMER CONNECTION IN NEW LAVATORY TAILPIECES AS SHOWN.
- DOMESTIC PIPING TO BE ROUTED IN PLUMBING CHASE. SHOWN OFFSET FOR CLARITY.
- CONTRACTOR OPTION TO DEMO VENT PIPING BACK TO EXISTING VENT THROUGH ROOF OR REUSE IN PLACE AS APPROPRIATE BASED ON EXISTING PIPE CONDITION TO MATCH DESIGN VENT PIPE SIZES.
- EXISTING FLOOR DRAIN VENTS TO BE TIED BACK INTO NEW VENT PIPING.

[illegible]

**OBSEDIAN MIDDLE SCHOOL
MODERNIZATION**

REDMOND SCHOOL DISTRICT

BID SET

g Title: 192 - BOYS RESTROOM

Date : 2026-01-30

Project No. 25033

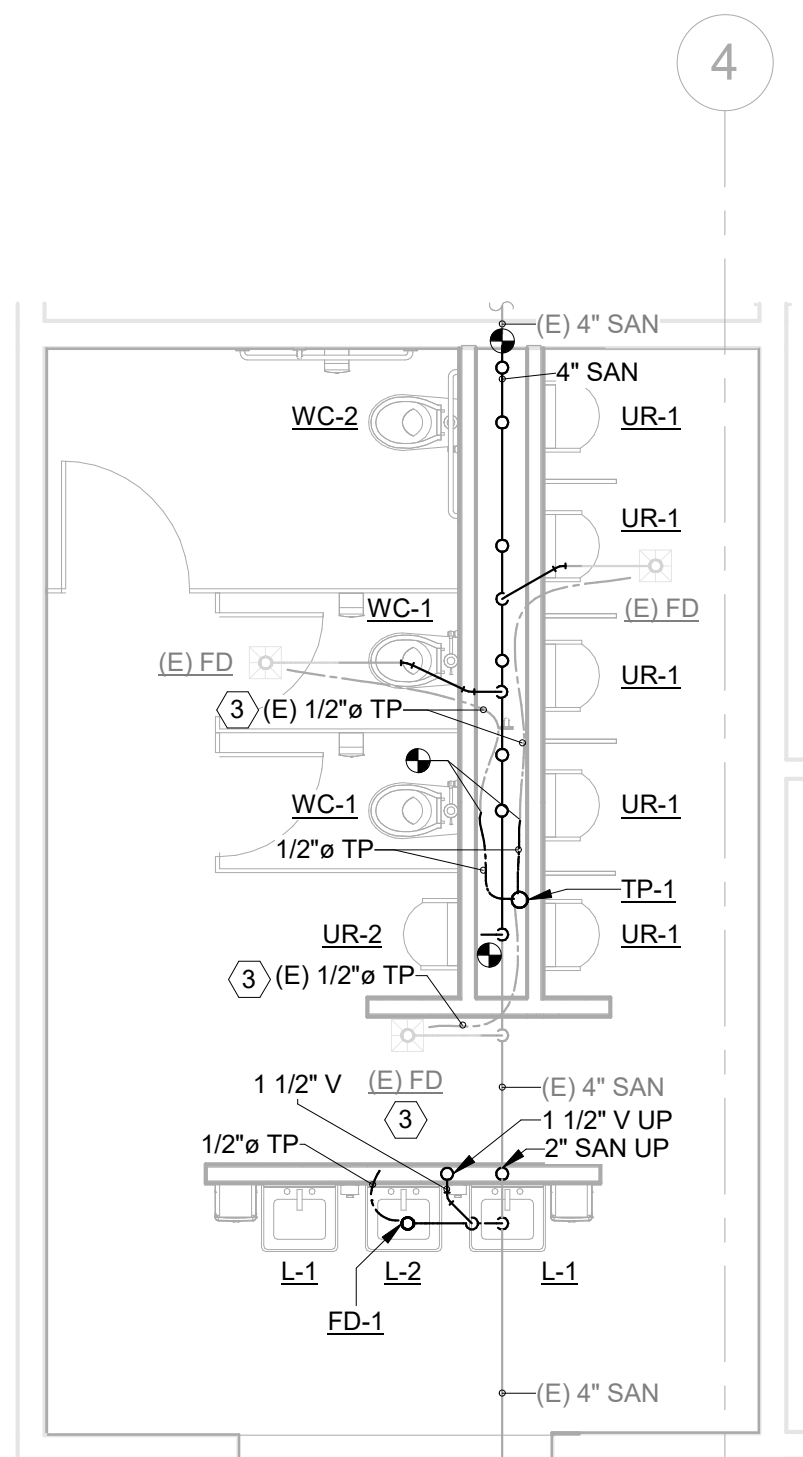
Sheet No

P1.02

- A. PROVIDE ACCESS DOORS TO ALLOW SERVICE AND INSPECTION OF EQUIPMENT, VALVES, AND OTHER DEVICES INSTALLED IN INACCESSIBLE LOCATIONS. COORDINATE SUCH INSTALLATIONS WITH THE ARCHITECT AND ENGINEER.
- B. PROVIDE TRAP SEALS AND TRAP PRIMERS FOR FLOOR DRAINS, FLOOR SINKS, AND OTHER FLOOR RECEPTORS.
- C. INSTALL ACCESSIBLE PLUMBING FIXTURES IN COMPLIANCE WITH ADA REQUIREMENTS. INSULATE EXPOSED PIPING BELOW ADA ACCESSIBLE FIXTURES.
- D. INSTALL FLOOR DRAIN STRAINERS AND CLEANOUT COVERS FLUSH AND LEVEL WITH FINISHED FLOOR.
- E. PIPING SHALL BE IDENTIFIED WITH PIPE LABELS MARKED AT A MAXIMUM OF 10 FEET. VALVES SHALL BE IDENTIFIED WITH BRASS OR ALUMINUM VALVE TAGS.
- F. PROVIDE AND INSTALL PIPE GUIDES, EXPANSION JOINTS, AND HANGERS PER MANUFACTURER'S RECOMMENDATIONS.
- G. ALL PENETRATIONS SHALL BE FINISHED WITH A CHROME ESCUTCHEON PLATE.
- H. MAINTAIN THE INTEGRITY OF DRAFTSTOPPING WHERE PIPES PENETRATE DRAFTSTOPPING MATERIALS.
- I. NO FITTINGS OR PIPING CONNECTIONS SHALL BE INSTALLED UNDERSLAB.
- J. PROVIDE THE PLUMBING FIXTURE SCHEDULE FOR PIPE SIZES TO INDIVIDUAL FIXTURES.
- K. COORDINATE CONCRETE PENETRATIONS WITH STRUCTURAL DRAWINGS TO VERIFY HOW AND WHERE CONCRETE CAN BE CUT.
- L. PROVIDE SLOPE RATER FOR ALL PLUMBING SCHEDULE PIPING SHALL BE INSTALLED AT A MINIMUM 1/4" PER FOOT (2%) SLOPE IN DIRECTION OF FLOW UNLESS OTHERWISE INDICATED ON THE DRAWINGS.

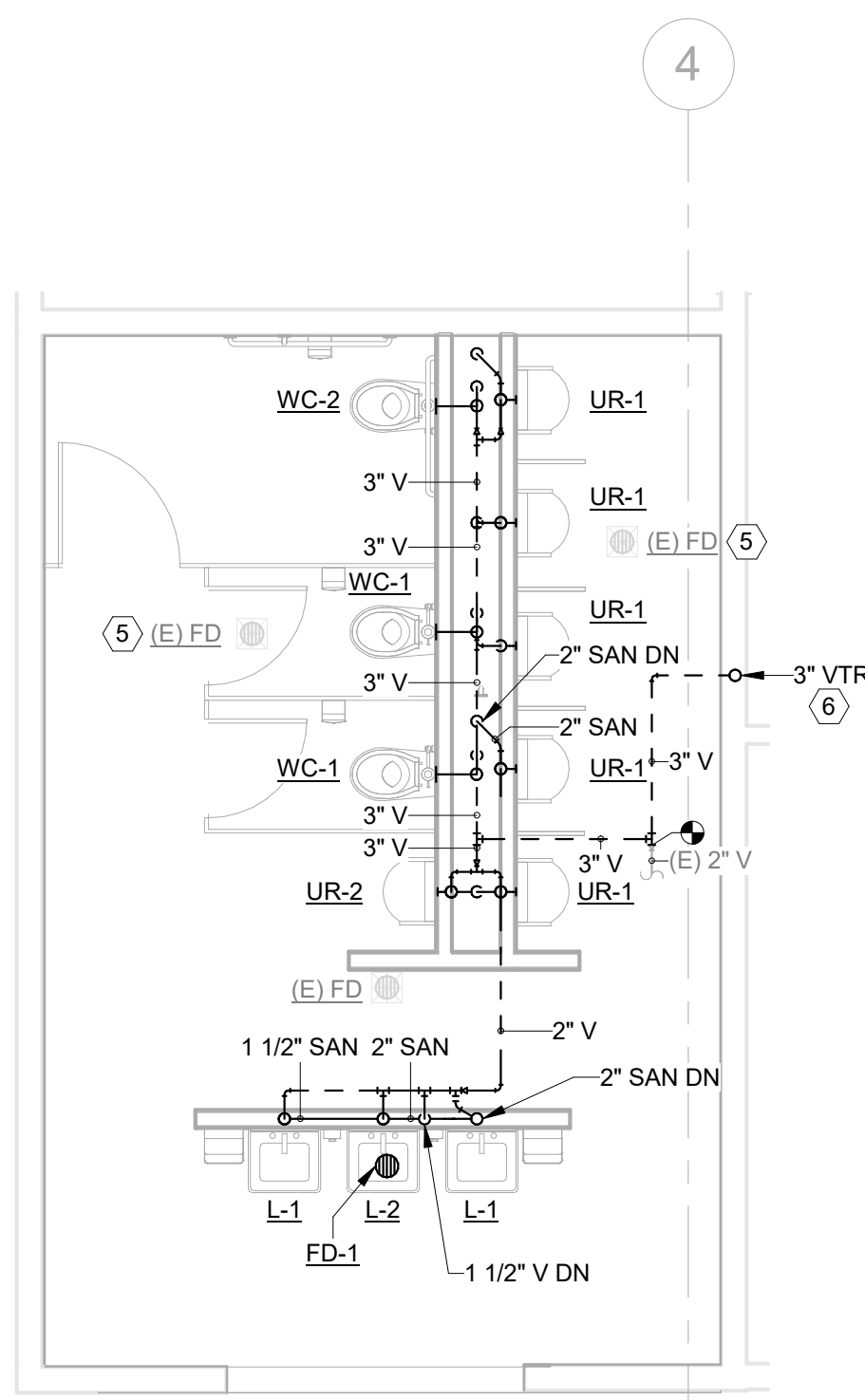
- A. LOCATIONS AND DIMENSIONS OF EXISTING FACILITIES IDENTIFIED ON THIS DRAWING ARE APPROXIMATE AND REPRESENT THE BEST AVAILABLE INFORMATION BASED ON A COMBINATION OF FIELD INVESTIGATIONS AND VARIOUS DESIGN AND RECORD DRAWINGS AVAILABLE AT THE TIME OF CONSTRUCTION. THE VERIFICATION OF THE EXISTING FACILITIES, INCLUDING DEMOLITION WORK, NECESSARY FITTINGS, TRANSITIONS, AND OTHER COMPONENTS AS REQUIRED FOR A COMPLETE AND FUNCTIONAL INSTALLATION OF NEW SYSTEMS AT NO ADDITIONAL COST TO THE OWNER.
- B. EXISTING PLUMBING EQUIPMENT, FIXTURES, AND PIPING SHOWN AS DARK AND DASHED SHALL BE TO REMAIN. EXISTING PLUMBING EQUIPMENT, FIXTURES, AND PIPING SHOWN LIGHT SHALL REMAIN UNCHANGED.
- C. THE PLUMBING CONTRACTOR SHALL COORDINATE SALVAGE OF REMOVED EQUIPMENT IN GOOD CONDITION WITH THE OWNER. THE PLUMBING CONTRACTOR SHALL DISPOSE OF UNWANTED EQUIPMENT.
- D. THE PLUMBING CONTRACTOR SHALL BE RESPONSIBLE FOR REPAIR ROOF AND WALL ASSEMBLIES ASSOCIATED WITH PLUMBING DEMOLITION.
- E. CONCRETE SLAB CUTTING REGIONS SHOWN ON DRAWINGS ARE APPROXIMATE AND MUST BE FIELD COORDINATED PRIOR TO THE CUTTING OF THE SLAB.
- F. PROVIDE EXISTING BUILDING ELEMENTS DURING DEMOLITION WORK. COORDINATE WITH OTHER TRADES TO ENSURE NO EXISTING EQUIPMENT/PIPING TO REMAIN IS DAMAGED DURING THE DEMOLITION WORK.

- 1 DEMO DOMESTIC WATER PIPE BACK TO MAIN, INCLUDING TEE, TO AVOID DEAD LEGS.
- 2 CONTRACTOR OPTION TO DEMO ENTIRE SECTION OF SANITARY PIPING AS SHOWN OR SELECTIVELY DEMO BASED ON DEMOLISHED AND NEW PIPING LOCATIONS AND REUSE PIPING IN PLACE AS APPROPRIATE BASED ON EXISTING PIPE CONDITIONS. COORDINATE WITH SLAB DEMOLITION TO MINIMIZE SAWCUTTING FLOOR.
- 3 ROUTING OF EXISTING TRAP PRIMER TO BE DETERMINED UNKNOWN. CONNECT EXISTING TRAP PRIMER PIPING TO NEW TRAP PRIMER TP-1 AS SHOWN.
- 4 DOMESTIC PIPING TO BE ROUTED IN PLUMBING CHASE. SHOWN OFFSHORE FOR CLARITY.
- 5 EXISTING FLOOR DRAIN VENTS TO BE TIED BACK INTO NEW VENT PIPING.
- 6 EXISTING ROOF PENETRATION FOR VENT TO BE RESIZED TO ACCOMMODATE 3" VENT.



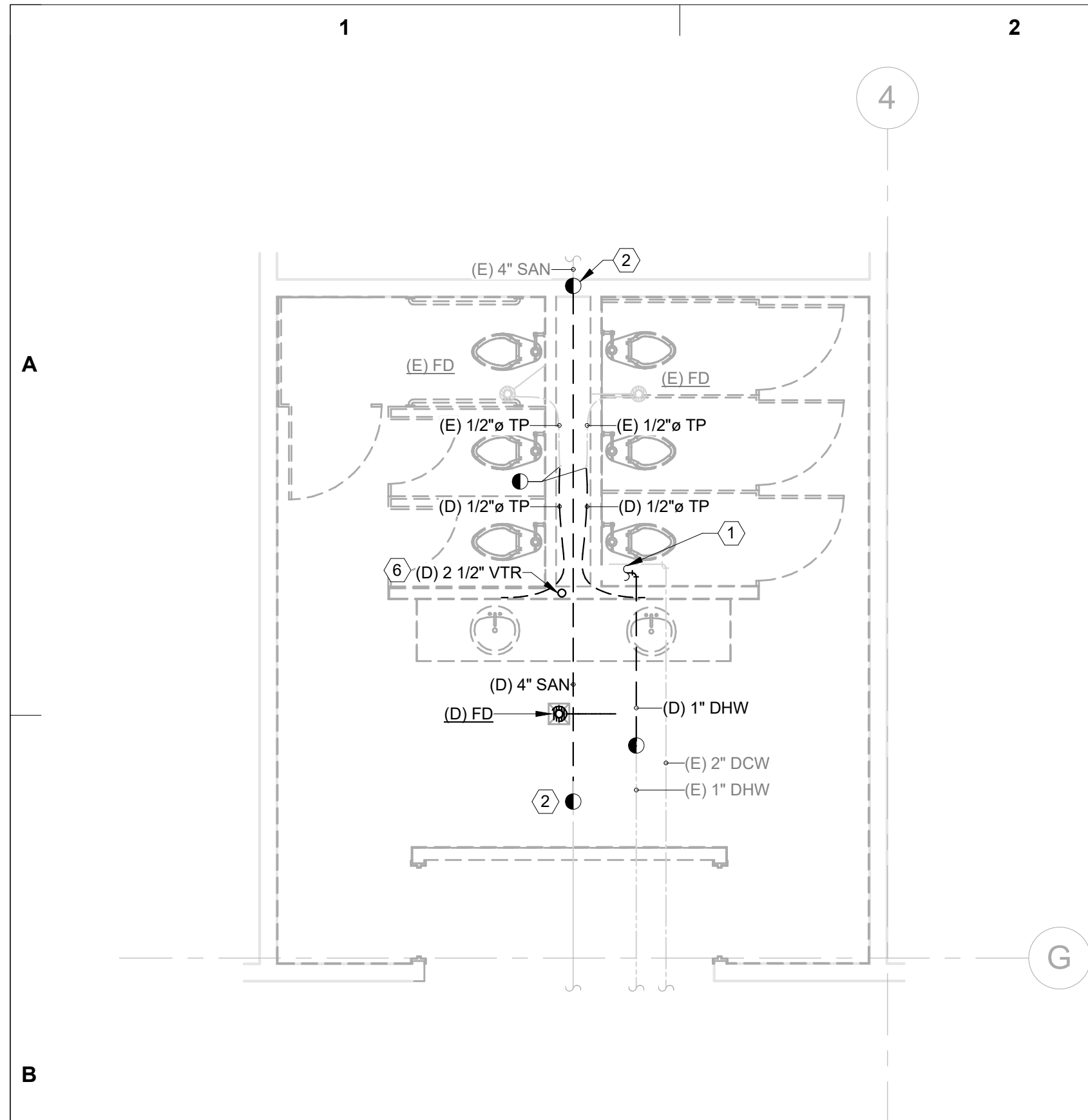
1 DEMO PLUMBING PLAN - 192 BOYS RESTROOM
1/4" = 1'-0" @ FULL SIZE

2 **UNDERSLAB PLUMBING PLAN - 192 BOYS RESTROOM**
1/4" = 1'-0" @ FULL SIZE

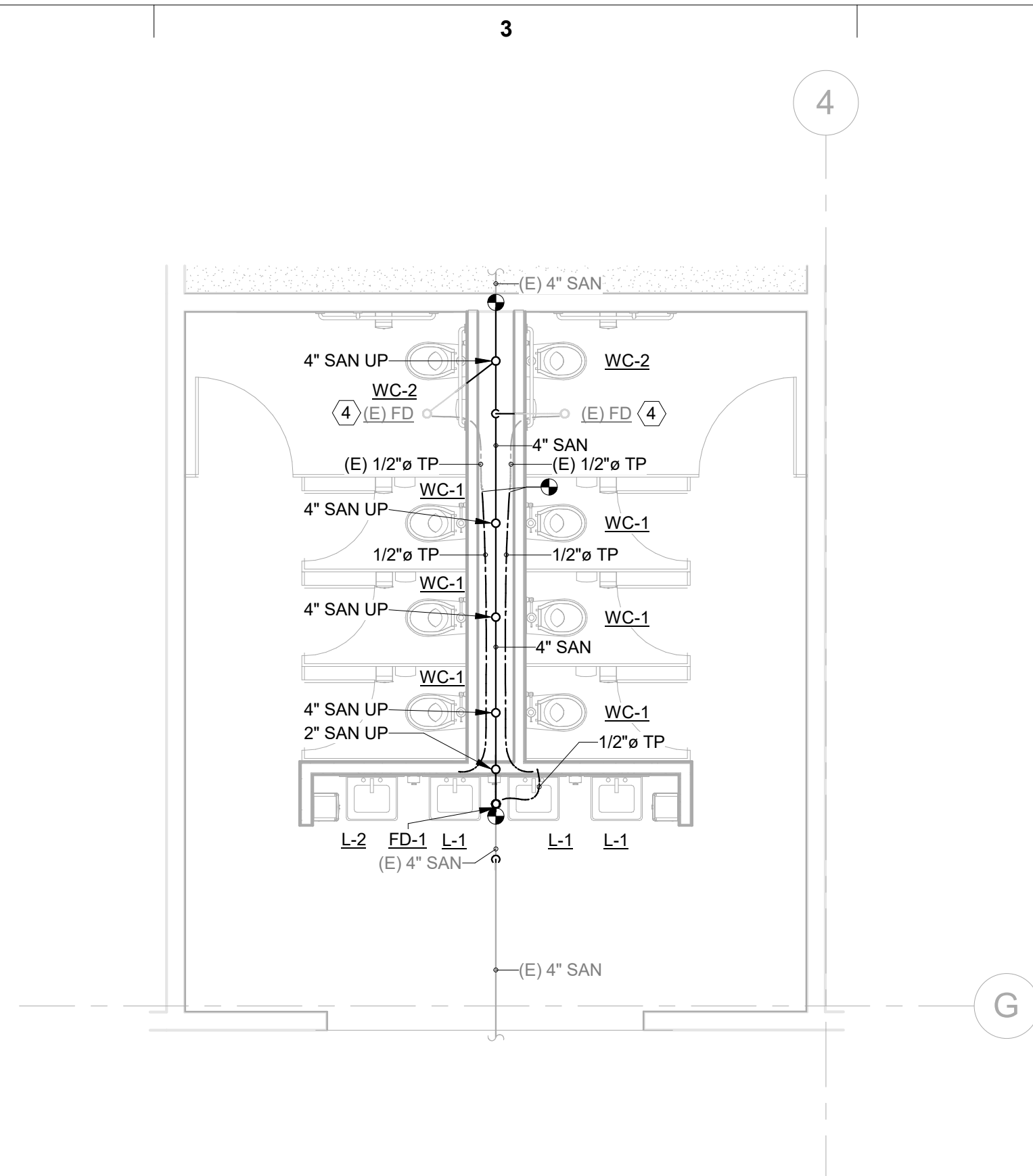


3 DOMESTIC PLAN - 192 BOYS RESTROOM
1/4" = 1'-0" @ FULL SIZE

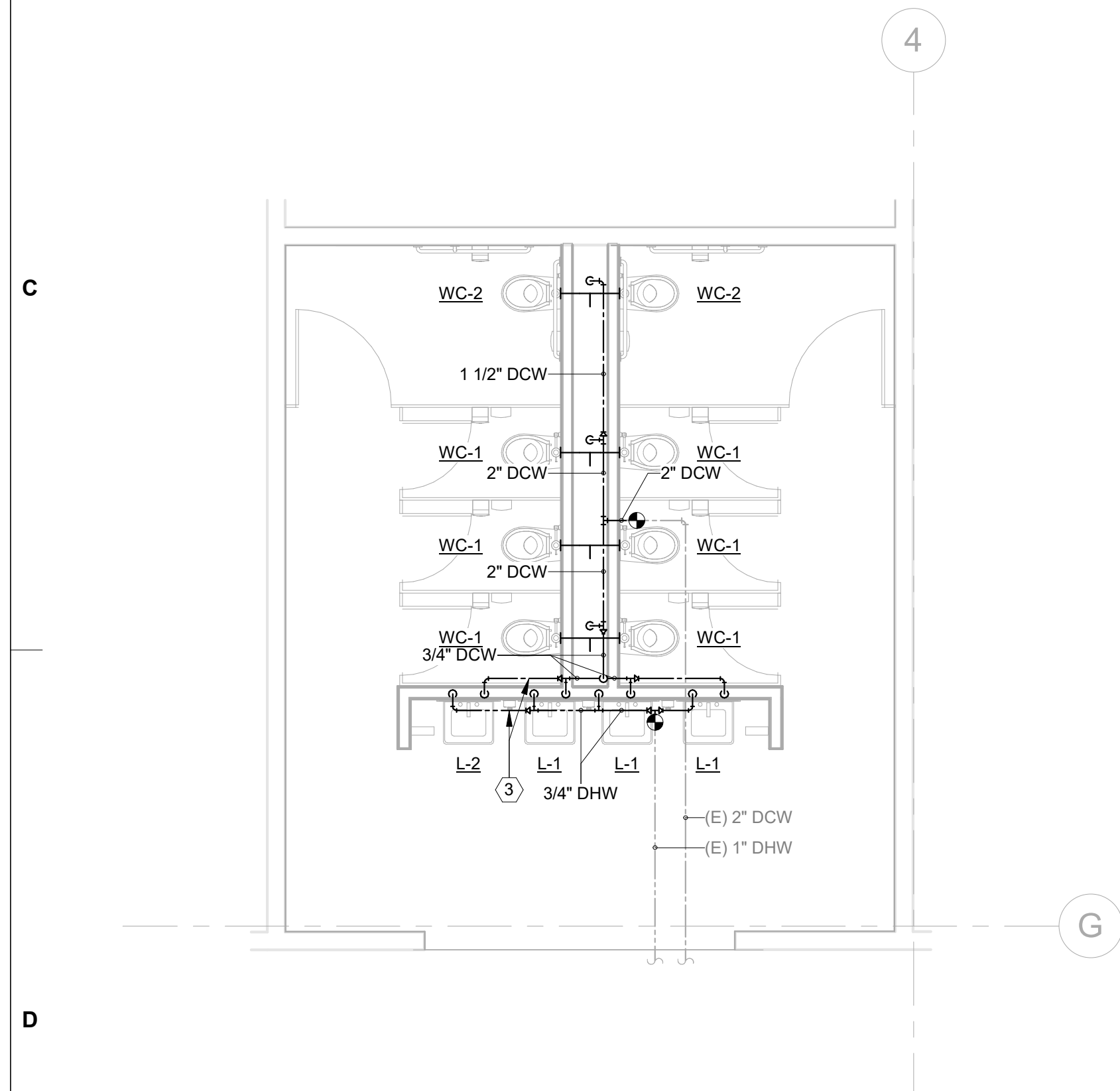
4 SANITARY PLAN - 192 BOYS RESTROOM
1/4" = 1'-0" @ FULL SIZE



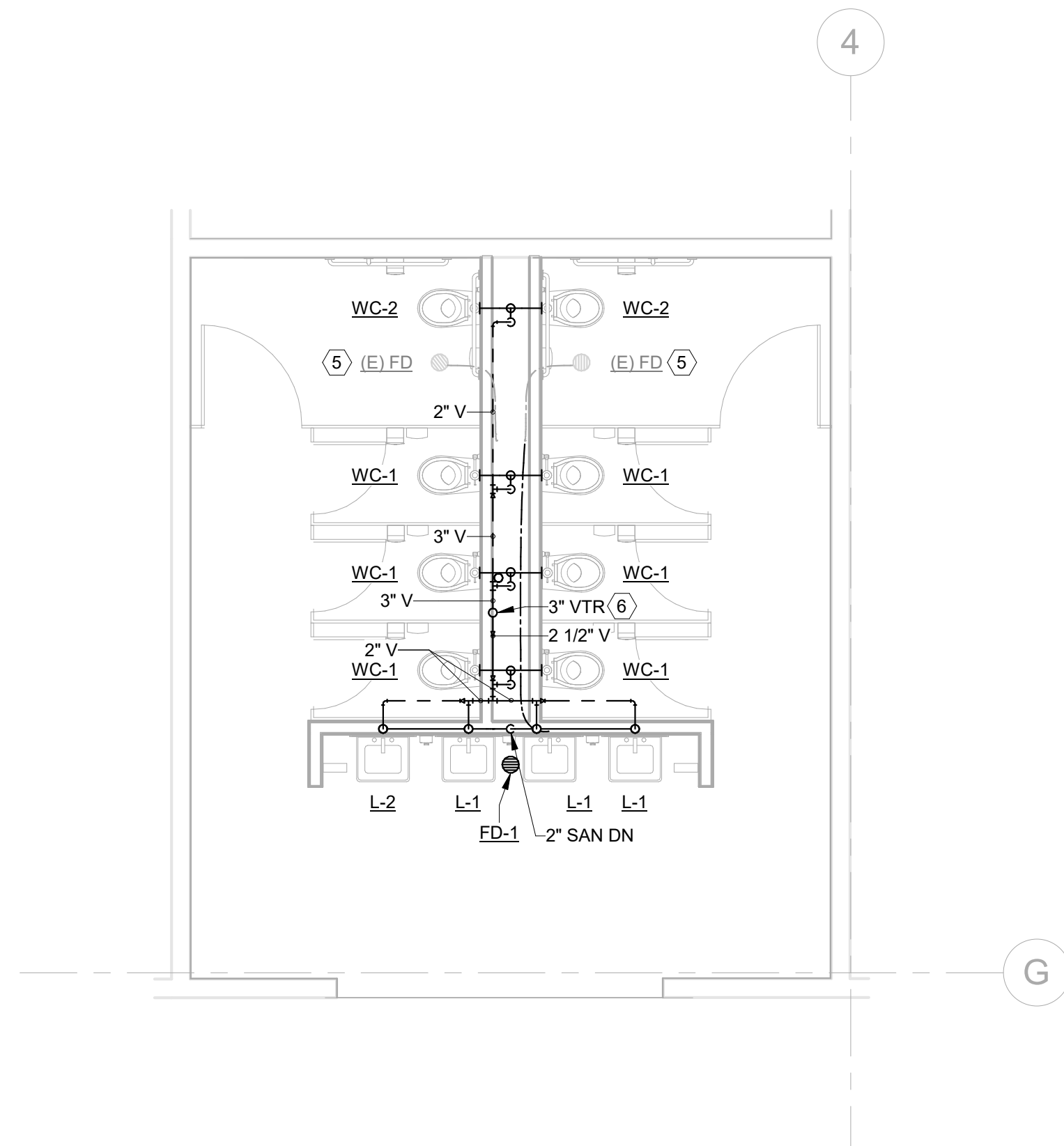
1 DEMO PLUMBING PLAN - 193 GIRLS RESTROOM
1/4" = 1'-0" @ FULL SIZE



2 UNDERSLAB PLUMBING PLAN - 193 GIRLS RESTROOM
1/4" = 1'-0" @ FULL SIZE



3 DOMESTIC PLAN - 193 GIRLS RESTROOM
1/4" = 1'-0" @ FULL SIZE



4 SANITARY PLAN - 193 GIRLS RESTROOM
1/4" = 1'-0" @ FULL SIZE

PLUMBING PLAN NOTES

- A. PROVIDE ACCESS DOORS TO ALLOW SERVICE AND INSPECTION OF EQUIPMENT, VALVES, AND OTHER DEVICES INSTALLED IN INACCESSIBLE LOCATIONS. COORDINATE SUCH INSTALLATIONS WITH THE ARCHITECT AND ENGINEER.
- B. PROVIDE TRAP SEALS AND TRAP PRIMERS FOR FLOOR DRAINS, FLOOR SINKS, AND OTHER FLOOR RECEPTORS.
- C. INSTALL ACCESSIBLE PLUMBING FIXTURES IN COMPLIANCE WITH ADA REQUIREMENTS. INSULATE EXPOSED PIPING BELOW ADA ACCESSIBLE FIXTURES.
- D. INSTALL FLOOR DRAIN STRAINERS AND CLEANOUT COVERS FLUSH AND LEVEL WITH FINISHED FLOOR.
- E. PIPING SHALL BE IDENTIFIED WITH PIPE LABELS MARKED AT A MAXIMUM OF EVERY 5 FT. VALVES SHALL BE IDENTIFIED WITH BRASS OR ALUMINUM VALVE TAGS.
- F. PROVIDE AND INSTALL PIPE GUIDES, EXPANSION JOINTS, AND HANGERS PER MANUFACTURER'S RECOMMENDATIONS.
- G. PIPING WITH PENETRATIONS SHALL BE FINISHED WITH A CHROME ESCUTCHEON PLATE.
- H. MAINTAIN THE INTEGRITY OF DRAFTSTOPPING WHERE PIPES PENETRATE DRAFTSTOPPING MATERIALS.
- I. NO JOISTS OR DRIVING CONNECTIONS SHALL BE INSTALLED UNDERSLAB.
- J. REFER TO THE PLUMBING FIXTURE SCHEDULE FOR PIPE SIZES TO INDIVIDUAL FIXTURES.
- K. COORDINATE CONCRETE PENETRATIONS WITH STRUCTURAL DRAWINGS TO VERIFY HOW AND WHERE CONCRETE CAN BE CUT.
- L. SAYERS SEWER, RAINWATER, AND OTHER DRAIN PIPING SHALL BE INSTALLED AT A MINIMUM 1/4" PER FOOT (2%) SLOPE IN DIRECTION OF FLOW UNLESS OTHERWISE INDICATED ON THE DRAWINGS.

PLUMBING DEMO NOTES

- A. LOCATIONS AND DIMENSIONS OF EXISTING FACILITIES IDENTIFIED ON THIS DRAWING ARE APPROXIMATE AND REPRESENT THE BEST AVAILABLE INFORMATION BASED ON A COMBINATION OF FIELD INVESTIGATIONS AND VARIOUS DESIGN AND RECORD DRAWINGS AVAILABLE AT THE TIME OF DESIGN. FIELD VERIFY LOCATIONS PRIOR TO BEGINNING WORK. ORDERING EQUIPMENT AND DURING PERFORMANCE OF THE WORK, PROVIDE DEMOLITION WORK, NECESSARY FITTINGS, TRANSITIONS, AND OTHER COMPONENTS AS REQUIRED FOR A COMPLETE AND FUNCTIONAL INSTALLATION OF NEW SYSTEMS AT NO ADDITIONAL COST TO THE OWNER.
- B. EXISTING PLUMBING EQUIPMENT, FIXTURES, AND PIPING SHALL BE DARK AND DASHED SHALL BE DEMOLISHED. EXISTING PLUMBING EQUIPMENT, FIXTURES, AND PIPING SHOWN LIGHT SHALL REMAIN UNCHANGED.
- C. THE PLUMBING CONTRACTOR SHALL COORDINATE SALVAGE OF REMOVED EQUIPMENT IN GOOD CONDITION WITH THE OWNER. THE PLUMBING CONTRACTOR SHALL DISPOSE OF UNWANTED EQUIPMENT.
- D. COORDINATE WITH GENERAL CONTRACTOR FOR REMOVAL, REPAIR ROOF AND WALL ASSEMBLIES ASSOCIATED WITH PLUMBING DEMOLITION.
- E. CONCRETE SLAB CUTTING REGIONS SHOWN ON DRAWINGS ARE APPROXIMATE AND MUST BE FIELD COORDINATED PRIOR TO THE CUTTING OF THE SLAB.
- F. PROTECT EXISTING BUILDING ELEMENTS DURING DEMOLITION WORK. COORDINATE WITH OTHER TRADES TO ENSURE NO EXISTING EQUIPMENT/PIPING TO REMAIN IS DAMAGED DURING THE DEMOLITION WORK.

KEY NOTES:

- 1 ROUTING OF EXISTING DOMESTIC WATER WITHIN PLUMBING CHASE UNKNOWN. CONTRACTOR OPTION TO DEMO ALL EXISTING DOMESTIC WATER IN PLUMBING CHASE OR REUSE IN PLACE AS APPROPRIATE BASED ON EXISTING PIPE CONDITION TO MATCH DESIGN CONNECTION SIZES
- 2 CONTRACTOR OPTION TO DEMO ENTIRE SECTION OF SANITARY PIPING AS SHOWN OR SELECTIVELY DEMO BASED ON DEMOLISHED AND NEW FIXTURE LOCATIONS AND REUSE PIPING IN PLACE AS APPROPRIATE BASED ON EXISTING PIPE CONDITIONS. COORDINATE WITH SLAB DEMOLITION TO MINIMIZE SAWCUTTING FLOOR.
- 3 DOMESTIC PIPING TO BE ROUTED IN PLUMBING CHASE. SHOWN OFFSET FOR CLARITY.
- 4 ROUTING OF EXISTING TRAP PRIMER PIPING UNKNOWN. CONNECT EXISTING TRAP PRIMER PIPING TO NEW TRAP PRIMER TP-1 AS SHOWN.
- 5 EXISTING FLOOR DRAIN VENTS TO BE TIED BACK INTO NEW VENT PIPING.
- 6 EXISTING ROOF PENETRATION FOR VENT TO BE RESIZED TO ACCOMMODATE 3" VENT.